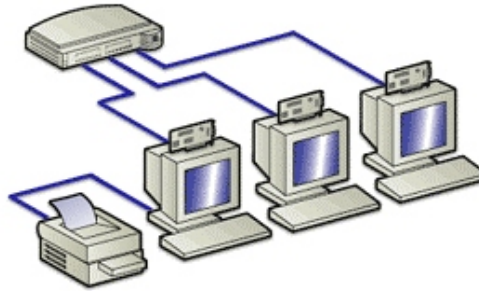




# NETWORK MAP & PRIORITY ASSESSMENT



**TECHMARK**  
 PO BOX 706  
 MILLERSVILLE MD 21108  
 PHONE (410) 987-5667 FAX: (410) 987-5767  
 WEB SITE: [www.techmarkinc.com](http://www.techmarkinc.com)

**Workstations**

IP Address:	Location:	O/S:	CPU:	Platform:	Status:
123-1-123-255	Office 1	Win 2K	P4 2.4	Graphics	Good
123-1-123-256	Lobby	Win 95	233mmx	Basic	Fair
123-1-123-257	Sales Floor	Win 3.11	386	Business	O/S UPG
123-1-123-257	Sales Floor	Win 98	P3 450	Marketing	Fair
123-1-123-258	Sales Floor	Linux	P3 450	Business	No Virus Protection

**Printers**

Device	Location	Connection	Address	# of Users	Status
HP LJ 4	Sales Floor	10/100 (Shared)	//ABC_NT/HPLJ4	5	Good
HP 4550 Color	Sales Floor	10/100 (Shared)	//ABC_NT/HPLJ4550	5	Good

**Network Hardware**

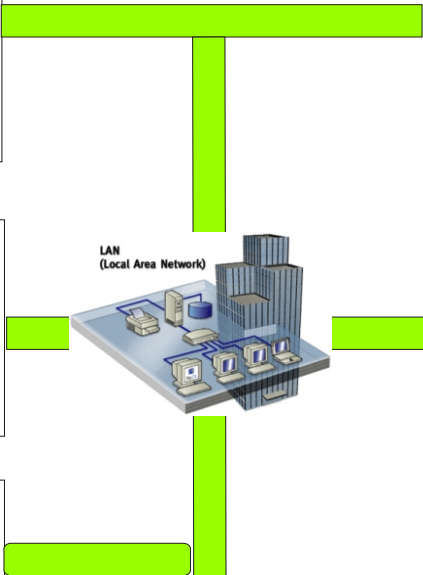
Device	Status
3Com Superstack 8 Port Switch	Operational, 3 Ports Available
Linksys Print Server	Operational, All Ports Filled

**SERVER #1**

**Hardware:** Asus P3B-F MB, Intel P3 600MHZ, 256MB PC133 ECC Registered, (1)40GB IDE HD, 32MB Video, 10/100, Floppy, CD Rom, 56K Modem, 250W PS.  
**O/S:** Windows NT Server 4.0 w/5 User Licenses  
**Internet Connection:** Dial Up 56K  
**Applications:** Mail Server, Macola V7.2 Accounting Package, Database, Website Server.  
**Resource Usage:** 76%

**Current Needs:** Router with Firewall, Corporate Virus Protection Suite. Tape Back Up System or Raid Array for Data Protection. Upgrade to DSL Modem for Faster Internet Access.  
**Future Needs:** Motherboard, CPU, Memory Upgrade to meet growth of employees, increased functions of Server, and increased Website Traffic. **Only 24% Available Free Resources. Possible Migration to Windows 2000 Server for Increased Security and compatibility.**

IP Address: 123-2-123-255



**Customer:** ABC Industries  
**Location:** Main Building  
**Address:** 123 Main Street  
**Site Survey By:** JSN 04/01/03  
**Assigned Technician:** Ola Yoosuf  
**Submitted:** 04/02/03

Meet's Users Needs/Stable Components
  Stable-UPG Within 6 Mo's.
  Immediate Attention Needed



**TECHMARK**  
PO BOX 706  
MILLERSVILLE MD 21108  
PHONE (410) 987-5667 FAX: (410) 987-5767



## Network Analysis & Priority Assessment

### What is a Network Analysis?

A network analysis from Techmark entails a Certified Engineer examining your current IT infrastructure and documenting your data in an easy to ready diagram. As a general rule, Techmark will assign your network a specific engineer so that they can become familiar with your network and your company. However, in the event your assigned engineer is unable to attend to your needs this network map allows another engineer to quickly assess your network and correct any issue that might occur in a timely manner.

### What is Priority Assessment?

Included in your Network Analysis will be our engineers projected needs for your company. This is based on information provided by you, as well as information collected in our network analysis. By prioritizing your needs, we are able to assist you in planning your IT budget for years to come.

### Why Choose TechMark?

Our motto is the “Mark of Excellence.” To achieve this goal with every client is essential to the success of our business and yours. With superior customer service, face to face business relationships, and superior workmanship we can achieve this goal in assisting your business to grow.

### Which manufacturer do I call for Help?.

Ever had to call one manufacturer for your PC, another for your printer, and a third company to make it all work? At TechMark, one call does it all. From procurement to installation to service, let Techmark make all the calls for you. If something isn't working, one call does is all you need.

